

Manatee Facts



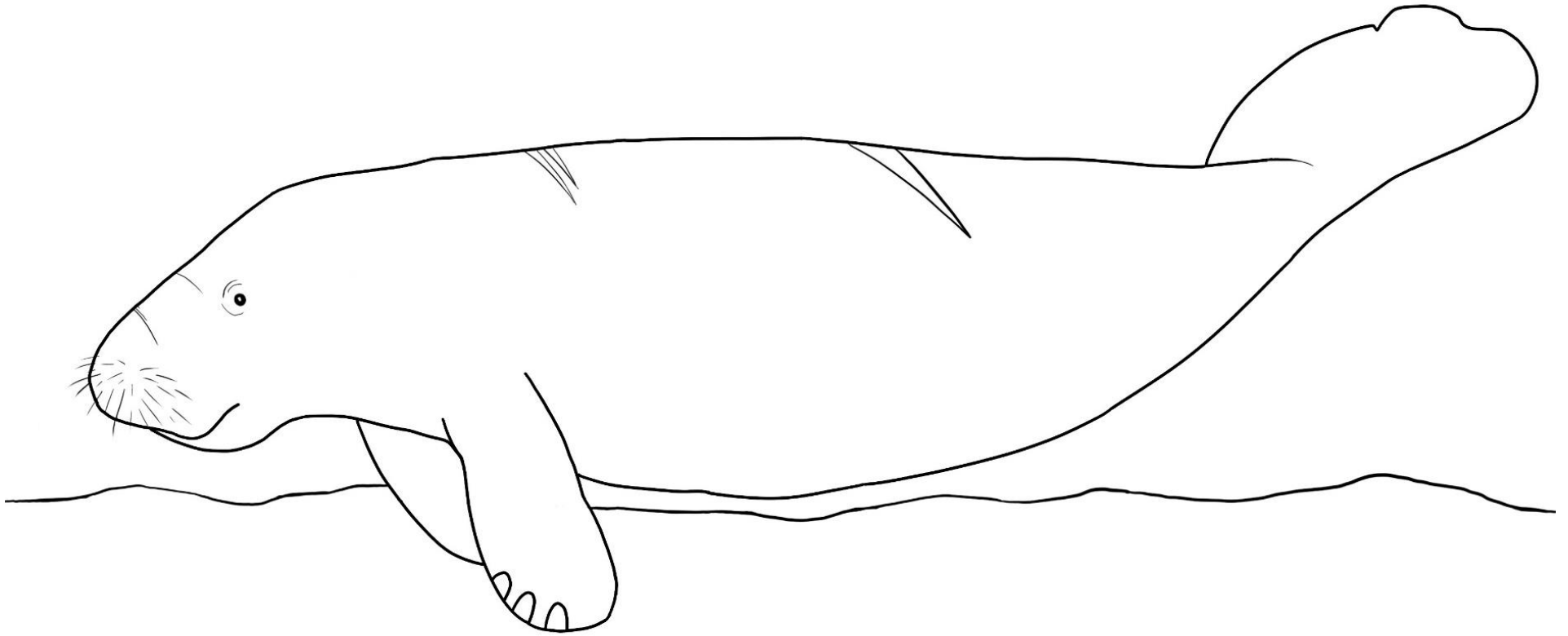
- Scientific name: *Trichechus manatus*
- Manatees are herbivorous marine mammals.
- They can hold their breath up to 20 minutes when resting!
- The average adult weighs about 1,000 pounds and eats about 100 pounds of aquatic plants every day.
- Calves stay with their mothers for about 2 years to learn where to find food, fresh water and warm water.



MANATEE LAGOON

AN FPL ECO-DISCOVERY CENTER®

Manatee Coloring Sheet



Manatee Art Lesson



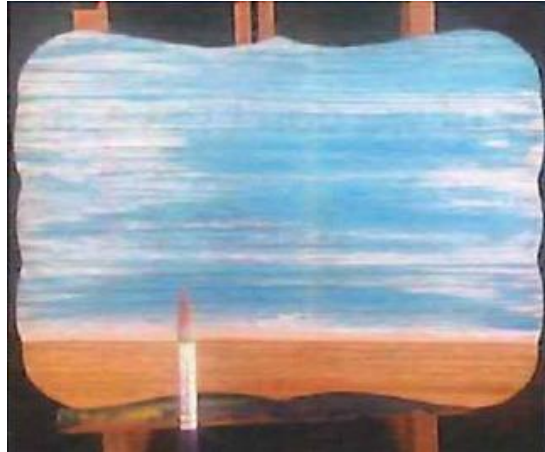
Materials Needed

- Paper or canvas
- Colored pencils, crayons, markers or paints in the following colors:
 - Gray
 - Green
 - Light blue
 - Dark blue
 - Black
 - Orange
 - Yellow
 - Red

Manatee Art Lesson – Page 2

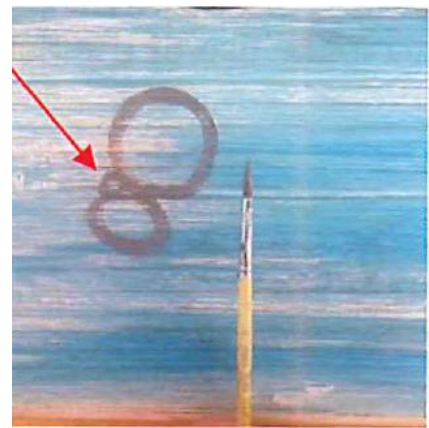
Step 1

Very lightly, using the light blue, shade in the top $\frac{3}{4}$ of the paper. Use the yellow to very lightly shade in the bottom $\frac{1}{4}$ of the paper.



Step 2

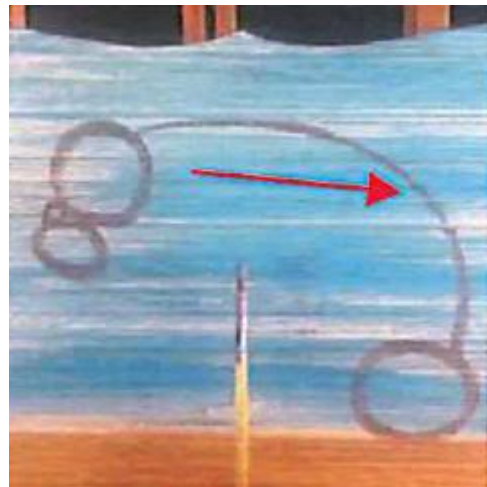
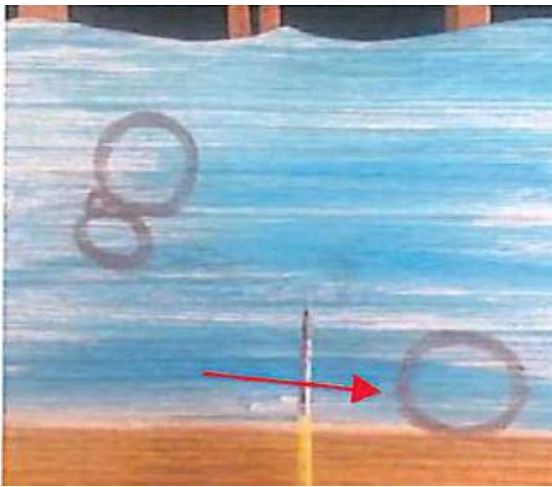
Using the gray, draw a circle toward the top left of the page. Then draw another oval underneath and a small circle in between the other two circles on the left side.



Manatee Art Lesson – Page 3

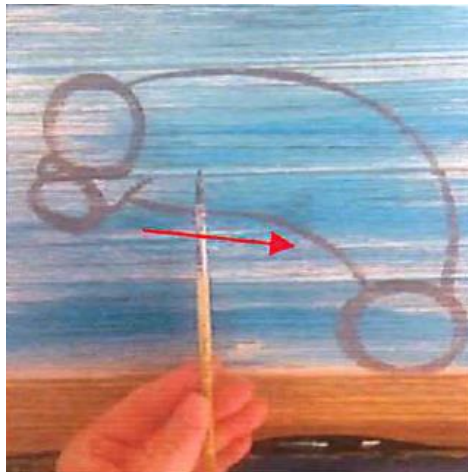
Step 3

Using the gray, draw a circle toward the bottom right of the paper, above the yellow portion. This will become the tail. Then draw an arc between the top and bottom circles.



Step 4

Using the gray, draw a line up from the bottom circle. Then draw another line starting half way through the last line and connect it to the tail circle. Trace the whole outline with gray to make the outline more smooth and natural.



Manatee Art Lesson – Page 4

Step 5

Using the gray, make two small circles. One below the outline and one on top of the outline. Then draw two lines to connect the lower circle to the outline. Then fill in the entire outline with gray.



Step 6

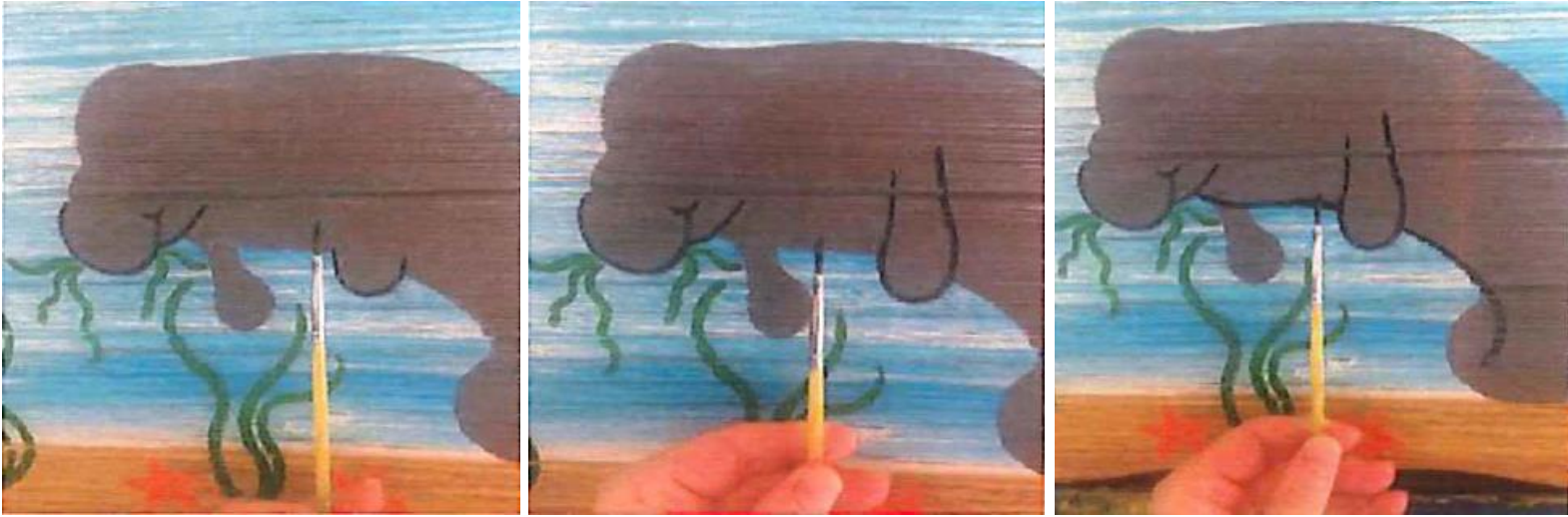
Using the orange, draw and fill in two stars on the yellow bottom. Using the green, draw thick lines on the bottom of the page and some coming out of the manatee's mouth. Then, using the dark blue, draw a solid blue circle with a sideways "V" for the fish and its tail.



Manatee Art Lesson – Page 5

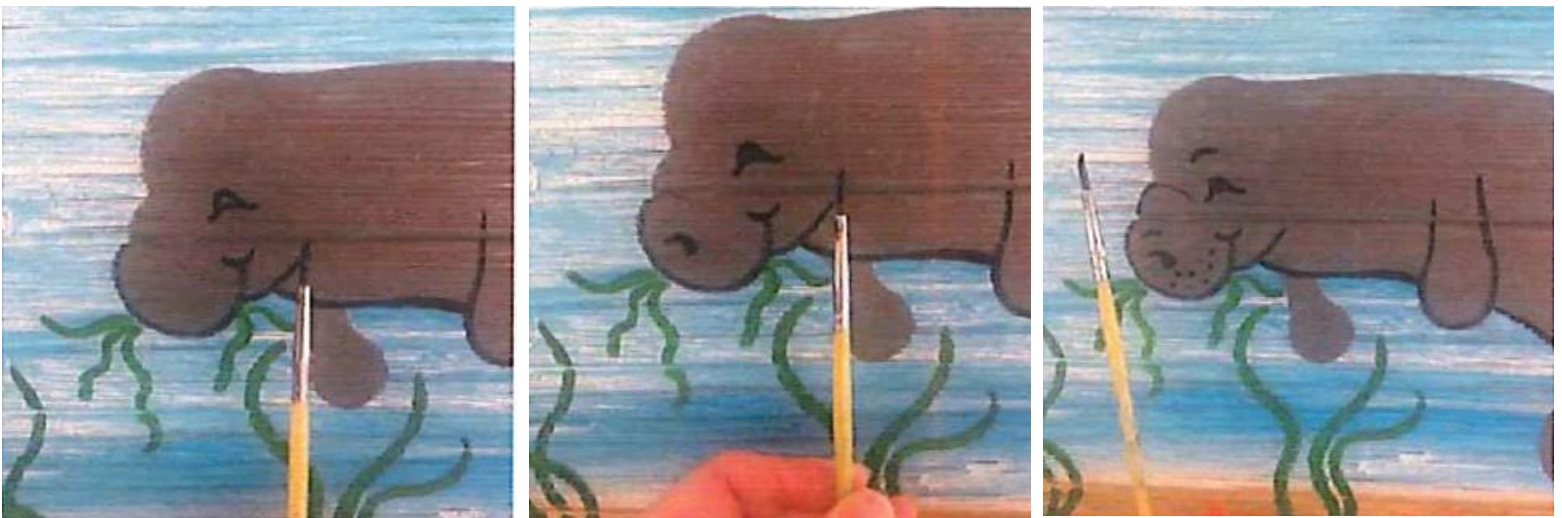
Step 7

Using the black, trace the outline of the manatee's face, adding a smile. Then trace the upper flipper and belly of the manatee.



Step 8

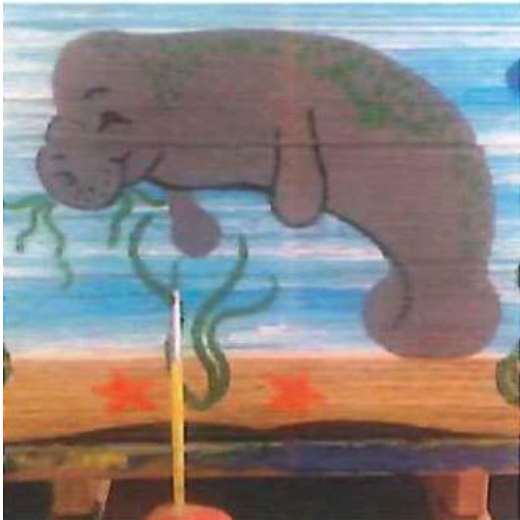
Using the black, draw a rounded triangle for the eye and a thick comma shape for the nostril. Then draw a curve above the eye for an eyebrow and add dots around the nose.



Manatee Art Lesson – Page 6

Step 9

Using the green, draw some algae on the manatee's back. Using the dark blue, draw circles with small "C's" in them for the bubbles.



Step 10

Using the dark blue, draw a triangle above and below the fish to make the fins. Then, using the red, add some dots on the sea stars. Be sure to sign your initials somewhere on your masterpiece to complete it and make it yours!

